

## APOLIPOPROTEIN E POLYMORPHISM, PARAOXONASE-1 ACTIVITY AND CORONARY ARTERY DISEASE: IS THERE A LINK

F. Nabatchian<sup>1</sup>, Sh. Khaghani<sup>2</sup>, R. Miri<sup>3</sup>, M. Mahmoodi<sup>4</sup>, A. Karimi<sup>5</sup>, P. Pasalar<sup>6</sup>

### ABSTRACT

**Objective:** The association of ApoE allele frequencies with coronary artery disease (CAD) remains unknown in developing countries. Paraoxonase 1 (PON1) is an enzyme that is associated with high density lipoprotein (HDL) and hydrolyzes oxidized lipids in oxidized low density lipoprotein (LDL) and thus protects against the development of atherosclerosis. In this study the association of apoE polymorphism and PON1 with premature CAD was determined.

**Methodology:** The frequency of apo E alleles and the activity of the PON1 among 162 patients with early and late onset CAD was examined.

**Results:** The mean age in the early and late-onset groups were  $44.9 \pm 4.9$  and  $71.7 \pm 2.5$  years respectively. Patients with early-onset CAD had significantly lower serum levels of HDL-C and higher LDL-C/HDL-C ratio than the late-onset group. There was no difference in serum levels of triglyceride, total cholesterol and LDL-C between the two groups. The  $e_2$  allele was significantly higher in the late-onset group. 35.0% of early-onset and 17.5% of late-onset group had low level of PON1. 86% of the early-onset CAD and all of the late-onset CAD patients with  $e_3/e_4$  genotype, had low or moderate level of PON1 activity.

**Conclusion:** We found a positive association between PON1 activity, HDL level and the onset of CAD. Our study suggests that there are modest associations between CAD and apo E alleles and that the lower activity of PON1 in the presence of lower apo E level may increase the susceptibility to early-onset CAD.

**KEY WORDS:** Paraoxonase, Atherosclerosis, Early-onset coronary artery disease, Apolipoprotein E polymorphism, Lipid peroxidation, Oxidative stress, Antioxidant.

Pak J Med Sci April - June 2008 (Part-I) Vol. 24 No. 2 204-208

### INTRODUCTION

Coronary artery disease (CAD) is a multifactorial disorder that has both genetic and nongenetic influences. The genetic influence is particularly strong in early onset CAD as

shown in family and twin studies. The familial component appears to decline with advancing age and becomes negligible in patients presenting with CHD later in life.<sup>1</sup> In many studies, the genetic etiology of early-onset CAD has been attributed to genetic factors such as apolipoprotein E (apoE) genotypes.<sup>2</sup>

Apo E gene is polymorphic with three common alleles,  $e_2$ ,  $e_3$ , and  $e_4$ , producing three isoforms of the protein, E2, E3, and E4.<sup>3,4</sup>  $e_2$  is associated with higher and  $e_4$  with lower concentrations of apo E.<sup>5</sup> This polymorphism is consistently associated with plasma concentrations of total and LDL cholesterol.<sup>6</sup> It has been shown that apo E knockout mice acquire increased susceptibility of lipid peroxidation under oxidative stress.<sup>7,8</sup> The apo E genotype

---

#### Correspondence

Parvin Pasalar, Ph.D  
Clinical Biochemistry, Dept. of Biochemistry  
Faculty of Medicine,  
Tehran University of Medical Sciences,  
Tehran, Iran  
E-mail: pasalar@tums.ac.ir

- \* Received for Publication: December 9, 2007
- \* Revision Received: February 14, 2007
- \* 2<sup>nd</sup> Revision Received: September 29, 2007
- \* Final Revision Accepted: December 25, 2007

yields poor predictive values when screening for clinically defined atherosclerosis.<sup>2</sup>

The other protein that has been associated with CAD is Paraoxonase (PON1). PON1 is exclusively associated with HDL and protects LDL from oxidation and prevents atherosclerosis development<sup>9-11</sup> via reduction of LDL in expense of PON1 oxidation (inactivation).<sup>12,13</sup> The idea that PON1 should have antioxidant potential arose from its structure; rich in reducing amino acid cysteine.<sup>14,15</sup> Increased susceptibility to atherosclerosis observed in PON1 knockout mice.<sup>16</sup> Clinically, PON1 activity is low when pathological vascular ageing occurs early and when cardiovascular risk is high, however, its activity is highly variable and its regulation is complex, involving both genetic and environmental factors.<sup>17</sup>

The interactive effect of PON1 and apo E was found in the development of the two most common forms of dementias; Alzheimer's and vascular dementias.<sup>18,19</sup> Also it has been shown that the modification of the apo E binding site to the LDL receptor and proteoglycan might have caused an accumulation of oxidized VLDL in the circulation system.<sup>8</sup>

Given the association between apo E gene polymorphism and apo E protein level, accelerated atherosclerosis in the absence of apo E, increased PON1 activity and protection of LDL from oxidation and atherosclerosis development,<sup>15</sup> we hypothesized that not only apo E polymorphism may be a risk factor for CAD but also its interaction of it with PON1 activity may be important in oxidative damages of endothelium and hence in atherogenesis. Accordingly, we hypothesized that because the genetic influence is stronger in early onset disease, patients presenting with early onset CAD would have an increased oxidative stress, compared to those manifesting CAD later in life. The delayed-onset was considered a sign of longevity and would serve as a comparative group to assess prevalence of the biochemical and genetic risk factors. In this study we measured total cholesterol (TC), HDL (HDL-C), LDL cholesterol (LDL-C), triglyceride (TG) and PON1 activity in early and late-onset CAD patients.

We also studied and compared the frequency of the apo E alleles and explored synergies between different apo E alleles and PON1 activity in the two groups.

## METHODOLOGY

**2.1 Study subjects:** The patients were recruited from the cardiac wards of Tehran University hospitals. All had CAD confirmed by angiography demonstrating one or more epicardial coronary vessels with greater than 50% diameter stenosis and were on optimal medical therapy. Patients with diabetes mellitus, kidney, thyroid or liver disease were excluded. Eligible patients were sequentially recruited into two groups: early-onset CAD ( $n = 80$ ) were those presenting with CAD under the age of 55 years (mean Age =  $44.9 \pm 4.9$  years); late-onset CAD ( $n = 80$ ) were patients presenting with CAD for the first time over the age of 65 years (mean Age =  $71.7 \pm 2.5$  years). The study was conducted following the approval of our institutional review board, and informed consent was obtained from all patients before inclusion in the study.

### 2.2. Laboratory methods

**2.2.1. Lipid profile and PON1 analysis:** A blood specimen was collected after overnight fasting for 12 hour. Serum TC and TG levels were measured by commercially available enzymatic kits. HDL-C was measured after precipitation with phosphotungstic acid and LDL-C was calculated using Friedwald's<sup>20</sup> formula for serum samples with TG values less than 400mg/dl. In patients with a TG value greater than 400mg/dl, LDL-C levels were not calculated. PON1 activity was measured using paraoxon as the substrate.<sup>21</sup> Paraoxonase activity is defined as the amount of enzyme which converts 1m mol paraoxone (Aryldialkyl phosphate) to nitrophenol in one minute.

**2.2.2. Genotyping:** Genomic DNA was extracted from whole blood leukocytes by a standard method.<sup>22</sup> Apo E genotyping was performed using 5'-TAAGCTTGGCACGGCTGTCCAAGGA-3' (forward) and 5'-ACAGAATTCGCCCGGCCTGGTACAC-3' (reverse) primers.<sup>23</sup> In this method PCR product was

incubated overnight at 37°C with cfoI restriction endonuclease. The digestion products were then separated using PAGE (15%) for 1.5 hours at 180 volts. The gel was then silver stained.

3. *Statistical analysis:* Statistically significant differences between parameters with a gaussian distribution (age, serum-TC, LDL-C and HDL-C) were sought by Student's unpaired t-test. Variables with a non-gaussian distribution (serum TG and PON1 activity) were compared using the Mann-Whitney U test. The  $\chi^2$  test was used to determine the significance of differences in allele frequency.  $P < 0.05$  were considered significant.

## RESULTS

Patients with early-onset CAD had significantly lower serum levels of HDL-C ( $P < 0.05$ ) and higher LDL-C/HDL-C ratio ( $P < 0.01$ ) than the late-onset group. There was no difference in serum levels of TG, TC, and LDL-C between the two groups. The lipid profile of the two groups is shown in Table-I. The frequency of the  $e_3$  allele was 88.1 and 81.9 percent in early and late onset CAD group respectively with no significant difference (Table-II). The frequency of  $e_2$  allele was 7.5 and 15 percent in early and late onset CAD group respectively with significant difference. The prevalence of  $e_2/e_3$  genotype was 7.5 and 22.4% in early and late -onset CAD respectively, with a significant difference (Table-III). The prevalence of  $e_3/e_4$  genotype was significantly different in the two groups. Although PON1 activity was not significantly different, when we divided the patients of each group into three groups of low,

Table-I: The mean  $\pm$ SD of serum lipid profile and PON1 activity in patients with early - and late - onset CAD

Variable	Early-onset	Late-onset
Chol (mg/dl)	230 $\pm$ 60	219 $\pm$ 47
TG (mg/dl)	232 $\pm$ 104	218 $\pm$ 77
HDL-C (mg/dl)	36 $\pm$ 14.8 *	40 $\pm$ 10.6
LDL-C (mg/dl)	145 $\pm$ 60	144 $\pm$ 48.7
LDL-C /HDL-C	5.1 $\pm$ 4.1 **	3.8 $\pm$ 1.8
Paraoxonase activity (IU/ml)	402 $\pm$ 262	430 $\pm$ 205

\*  $P < 0.05$

\*\*  $P < 0.01$

moderate and high level of PON1 activity, we found that 35.0% of early-onset group had the low level of PON 1 whereas this percentage was 17.5% in late-onset group. 86% of the early-onset CAD and all of the patients of late-onset CAD with  $apoe_3/e_4$  genotype, had low or moderate level of PON1 activity.

## DISCUSSION

Apo E influences lipoprotein metabolism and confers a risk for CHD. In accordance with other studies<sup>24,25</sup> we found that  $e_3$  is the most frequent and  $e_4$  is the least frequent allele in Iranian population (Table-II). The significantly increased prevalence of  $e_2$  allele in our older group with CAD (15 vs.7.5%) is in accordance with other studies demonstrating that the  $e_2$  is found more frequently in older compared to younger control groups.<sup>26</sup> The reason for the higher prevalence of  $e_2$  allele in the older population is not clear, but since  $apoe_2$  is associated with higher concentrations of apo E<sup>5,6</sup> and the apo E knockout mice show accelerated atherosclerosis lipid peroxidation<sup>7</sup> it could be speculated that higher concentrations of apo E<sup>5,6</sup> may delay the onset of CAD until later in life. The low level of PON1 activity in the early-onset CAD group was two fold greater than the late-onset, which is consistent with studies, including Tward et al<sup>27</sup> who demonstrated that PON1 transgenic mice are at lower risk for atherosclerosis and Rozenberg<sup>16</sup> who showed PON1 knockout mice are more prone to the disease. Because HDL3 has the highest cardio protective effects and PON1 activity<sup>28,13</sup> we may speculate that cardio-vasoprotective effect of the HDL is due to its association with PON1. The significant lower level of PON1 activity and HDL-C in the early onset CAD group may somehow related to lower level of

Table-II: The distribution of apolipoprotein E allele frequencies in the two groups

Allele	Early-onset	Late-onset
$e_2$	12 (7.5%)*	24 (15%)
$e_3$	141(88.125%)	131 (81.875%)
$e_4$	7 (4.375%)	5 (3.125%)

\*  $P < 0.05$

Table-III: The relationship between different level of PON1 activity (IU/ml) and apoE genotypes, in early and late onset CAD group.  
Group 1: < 238 (IU/ml) , Group 2: 239-452 (IU/ml), Group 3 : > 453 (IU/ml)

PON1 group	1	2	3	Total
<b>Genotype</b>				
<b>ε<sub>2</sub>/ε<sub>2</sub></b>				
Early onset	3(10.7%)	0(0%)	0(0%)	3(3.8%)
Late onset	0(0%)	1(2.9%)	1(3.2%)	2(2.5%)
<b>ε<sub>2</sub>/ε<sub>3</sub></b>				
Early onset	2(7.1%)	3(12%)	1(3.7%)	6(7.5%)
Late onset	3(21.4%)	7(20%)	8(25.8%)	18(22.4%)
<b>ε<sub>2</sub>/ε<sub>4</sub></b>				
Early onset	0(0%)	0(0%)	0(0%)	0(0%)
Late onset	0(0%)	1(2.9%)	1(3.2%)	2(2.5%)
<b>ε<sub>3</sub>/ε<sub>3</sub></b>				
Early onset	20(71.4%)	19(76%)	25(92.6%)	64(80%)
Late onset	10(71.4%)	24(68.6%)	21(67.7%)	55(68.8%)
<b>ε<sub>3</sub>/ε<sub>4</sub></b>				
Early onset	3(10.7%)	3(12%)	1(3.7%)	7(8.8%)
Late onset	1(7.1%)	2(5.7%)	0(0%)	3(3.8%)
<b>Total</b>				
Early onset	28(34.9%)	25(31.3%)	27(33.8%)	80(100%)
Late onset	14(17.5%)	35(43.8%)	31(38.8%)	80(100%)

HDL. Although the total and LDL cholesterol did not show any significant difference, The significantly higher LDL-C /HDL-C ratio in the early onset CAD group, implying a higher risk for this group.

In our study, 86% of the early-onset CAD and all of the patients of late-onset CAD with ε<sub>3</sub>/ε<sub>4</sub> genotype, had low or moderate level of PON1 activity, since apoε<sub>4</sub> is associated with lower concentrations of apo E<sup>5,6</sup> this may imply that their combined antioxidant effect may somehow be cumulative. The interrelationship between PON1 activity and apo E has been shown by Shih et al<sup>29</sup> who showed, increased atherosclerosis in mice, when PON1 deficiency was combined with apolipoprotein E (apoE) deficiency. Getz and Godfrey<sup>30</sup> found that exogenous PON1 is able to reverse the oxidative stress in macrophages in aged apolipoprotein E deficient and PON1 deficient mice.

### CONCLUSION

In summary, our study suggests that there are modest associations between CAD, apoE polymorphism and PON1 activity and that the lower activity of PON1 in the presence of lower level of apo E concentration may increase the susceptibility to atherosclerosis.

### ACKNOWLEDGEMENTS

The authors thank the nurses and night shifts staffs from Amiraalam Hospital and Tehran Heart Center for assistance in preparation of the blood samples. The research council of

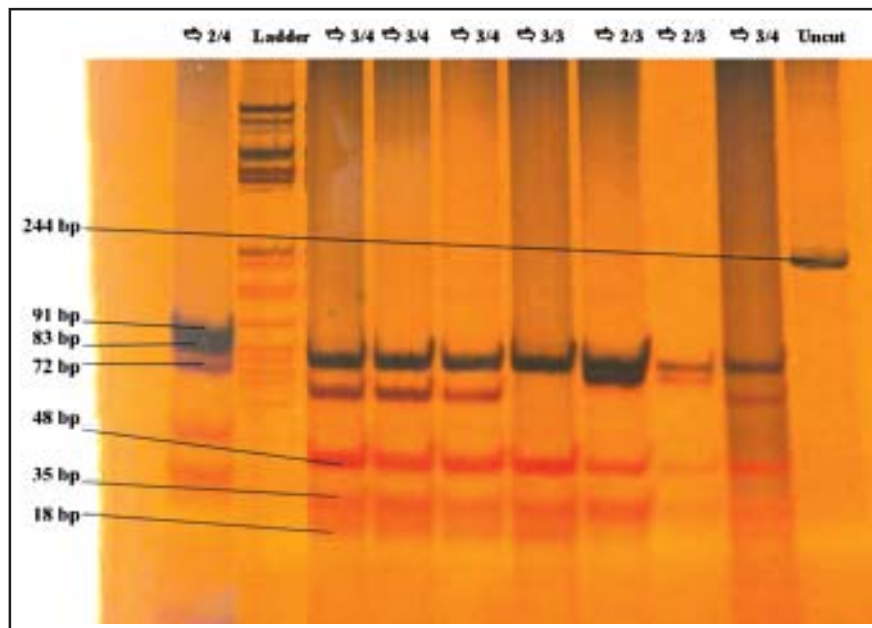


Fig-1: Apo E genotyping in CAD patients on polyacrylamide gel 15%, restriction enzyme cf ol and silver staining



Tehran University of Medical sciences grant number 1025 has supported this research.

## REFERENCES

- Rissanen A. "Familial occurrence of coronary heart disease: Effect of age at diagnosis *Am J Cardiol* 1979;44:60-6.
- Wilson PW, Myers RH, Larson MG, Ordovas JM, Wolf PA, Shaefer EJ. "Apolipoprotein E alleles, dyslipidemia and coronary heart disease. The Framingham Offspring Study" *JAMA* 1994;272:1666-71.
- Luo C C, Li WH, Moore MN. "Structure and evolution of the apolipoprotein multigene family" *J Mol Biol* 1986;187:325-40.
- Weisgraber KH, Rall SC, Mahley RW. "Human E apoprotein heterogeneity: cysteine-arginine interchanges in the amino acid sequence of the apo E isoforms" *J Biol Chem* 1981;256:9077-83.
- Hanis CL, Hewett-Emmett D, Douglas TC. "Effects of the apolipoprotein E polymorphism on levels of lipids, lipoproteins, and apolipoproteins among Mexican-Americans in Starr County, Texas" *Arterioscler Thromb Vasc Biol* 1991;11:362-70.
- Siest G, Pillot T, Régis-Bailly A. "Apolipoprotein E: an important gene and protein to follow in laboratory medicine" *Clin Chem* 1995;41:1068-86.
- Hayek T, Oiknine J, Brook JG, Aviram M. "Increased plasma and lipoprotein lipid peroxidation in apo E-deficient mice" *Biochem Biophys Res Commun* 1994;30:201(3):1567-74.
- Arai H, Uchida K, Fukunaga K, Nagasaka Y, Mohri S, Furumoto H, et al. "Effect of alpha-tocopherol on the oxidative modification of apolipoprotein E in human very-low-density lipoprotein" *Biosci Biotechnol Biochem* 2003;67(2):402-5.
- Hegle RA. "Paraoxonase genes and disease" *Ann Med* 1999;31(3):217-24.
- Rosenblat M, Draganov D, Watson CE. "Mouse macrophage PON2 is increased whereas cellular PON3 activity is decreased under oxidative stress" *Arterioscler. Thromb Vasc Biol* 2003;23(3):468-74.
- Noto H, Hashimoto Y, Satoh H. "Exclusive association of paraoxonase 1 with igh-density lipoprotein particles in apolipoprotein A-I deficiency" *Biochem Biophys Res Commun* 2001;289:395-401.
- Aviram M, Rosenblat M, Billecke S. "Human serum paraoxonase (PON1) is inactivated by oxidized low density lipoprotein and preserved by antioxidants". *Free Radic Biol Med* 1999;26:892-904.
- Zhang B, Fan P, Shimoji E. "Inhibition of Cholesteryl Ester Transfer Protein Activity by JTT-705 Increases Apolipoprotein E-Containing High-Density Lipoprotein and Favorably Affects the Function and Enzyme Composition of High-Density Lipoprotein in Rabbits" *Arterioscler, Throm Vasc Biol* 2004;24:1910-15.
- Aviram M, Billecke S, Sorenson R. "Paraoxonase active site required for protection against LDL oxidation involves its free sulfhydryl group and is different from that required for its arylesterase/paraoxonase activities" *Arterioscler Throm Vasc Biol* 1998;18:e617-e1624.
- Shih DM, Gu L, Xia YR, "Mice lacking serum paraoxonase are susceptible to organophosphate toxicity and atherosclerosis", *Nature* 1998;394:284-7.
- Rozenberg O, Shih DM, Aviram M. "Paraoxonase 1 (PON1) attenuates macrophage oxidative status: studies in PON1 transfected cells and in PON1 transgenic mice." *Atherosclerosis* 2005;181(1):9-18.
- Bin Ali A, Zhang Q, Lim YK, Fang D, Retnam L, Lim SK. "Expression of major HDL-associated antioxidant PON-1 is gender dependent and regulated during inflammation" *Free Radic Biol Med*. 2003;1:34(7):824-9.
- Gupta H, White CR, Handattu S, Garber DW, Datta G, Chaddha M, et al. "Apolipoprotein E mimetic Peptide dramatically lowers plasma cholesterol and restores endothelial function in watanabe heritable hyperlipidemic rabbits" *Circulation*, 2005;14;111(23):3112-8.
- Janka Z, Juhasz A, Rimanoczy AA, Boda K, Marki-Zay J, et al. "Codon 311 (Cys → Ser) polymorphism of paraoxonase-2 gene is associated with apolipoprotein E4 allele in both Alzheimer's and vascular dementias" *Mol Psychiatry*, 2002;7(1):110-2.
- Friedewald WT, Levy RI, Fredrickson DS. "Estimation of the concentration of low-density lipoprotein cholesterol in plasma, without use of the preparative ultracentrifuge" *Clin Chem* 1972;18:499-502.
- Mackness B, Mackness MI, Arrol S, Turkie W, Julier K, Abuasha B, et al. "Serum paraoxonase (PON1) 55 and 192 polymorphism and paraoxonase activity and concentration in non-insulin dependent diabetes mellitus" *Atherosclerosis* 1998;139(2):341-9.
- Sambrook J, Russell DW. "Preparation and analysis of Eukaryotic genomic DNA" In: *Molecular cloning: A laboratory manual* edited by: Argentine J., Irwin N. Vol.1 Cold spring Harbor Laboratory Press; 2001; protocol 6.1.
- Lahoz C, OsGood D. "Frequency of phenotype-genotype discrepancies at the apolipoprotein E locus in a large population study" *Clin Chem* 1996;42:11,1817-23.
- Azizi F, Rahmani M, Raiszadeh F, Solati M, Navab M. "Association of lipids, lipoproteins, apolipoproteins and paraoxonase enzyme activity with premature coronary artery disease." *Coron Artery Dis* 2002;13(1):9-16.
- Vaisi Raygani A, Zahrai M, Vaisi Raygani A, Doosti M, Javadi Ec, Rezaei M, et al. "Association between apolipoprotein E polymorphism and Alzheimer disease in Tehran, Iran" *Neuro science Letters* 2005;375(1):1-6.
- Schachter F, Faure-Delanef L, Guenet F. "Genetic associations with human longevity at the APOE and ACE loci." *Nature Genet* 1994;6:29-32.
- Tward A, Xia YR, Wang XP. "Decreased atherosclerotic lesion formation in human serum paraoxonase transgenic mice" *Circulation*, 2002;106:484-90.
- Bergmeier C, Siekmeier R, Gross W. "Distribution spectrum of paraoxonase activity in HDL fractions." *Clin Chem* 2004;50(12):2309-15.
- Shih DM, Xia YR, Wang YP. "Combined serum paroxonase knockout/apolipoprotein E knockout mice exhibit increased lipoprotein oxidation and atherosclerosis" *J Biol Chem* 2000;275:17527-35.
- Getz GS, Reardon CA. "Paraoxonase, a cardio protective enzyme: continuing issues. *Curr Opin Lipidol* 2004;15(3):261-7.

---

### Authors:

- F. Nabatchian,
- Sh. Khaghani,
- P. Pasalar,  
Department of Biochemistry,
- R. Miri,  
Hospital of Imam Hossein,  
Shahid Beheshti University of Medical Sciences,  
Tehran, Iran,
- M. Mahmoodi,  
Amiraalam Hospital,  
1-3,5: Tehran University of Medical Sciences,  
Tehran, Iran.
- Karimi A,  
Tehran Heart Center,  
Tehran, Iran.